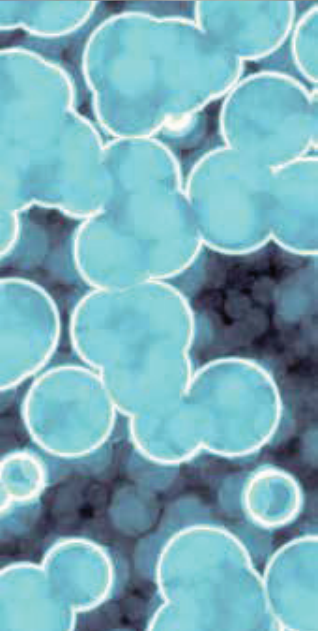
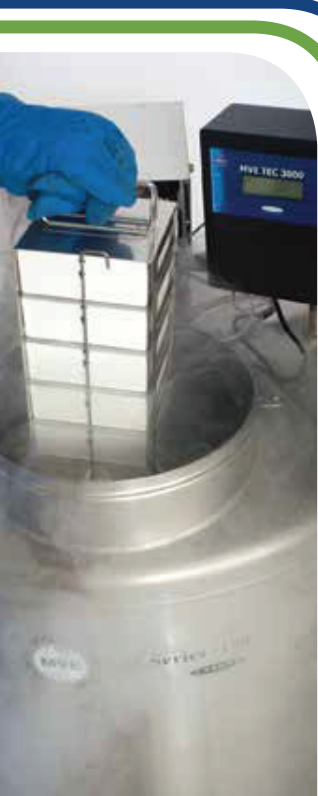


MVE SC Series

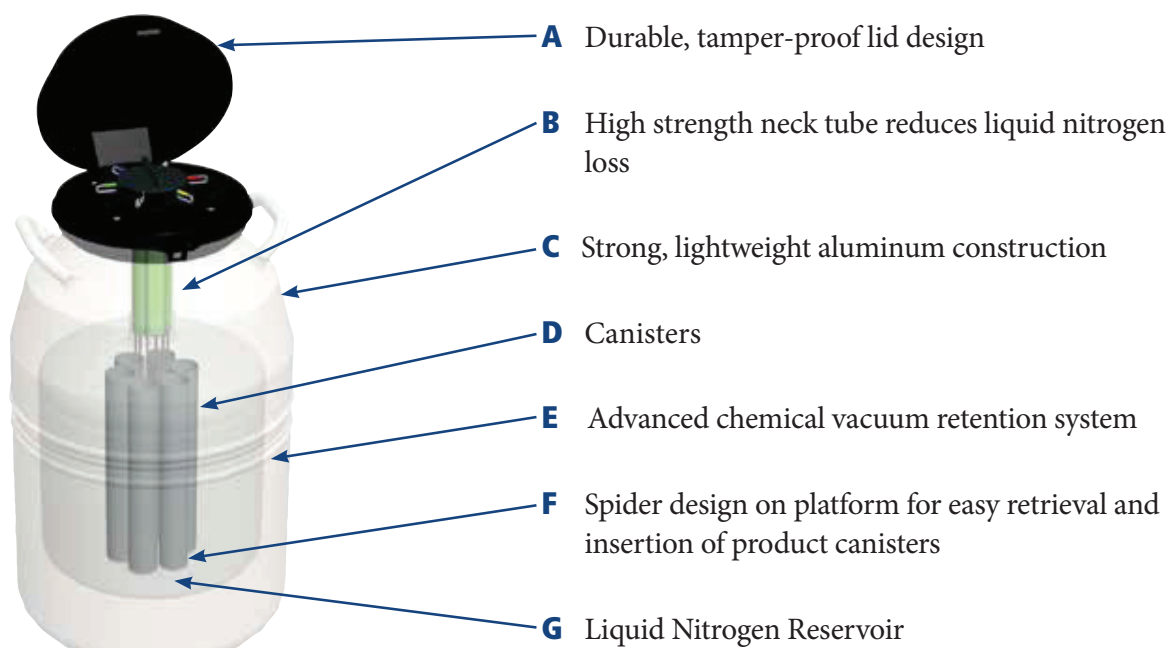
MVE offers the widest range of compact aluminum storage tanks available on the market today. Over the past 50 years, our product designs have improved through end-user input and evolved into a unique selection of units. The SC Series is designed for the user who has small capacity needs, but requires long-term storage and low liquid nitrogen consumption in a convenient lightweight package.

Features Include:

- Designed for large capacity storage
- Low liquid nitrogen consumption
- Convenient lightweight package



Tank Features



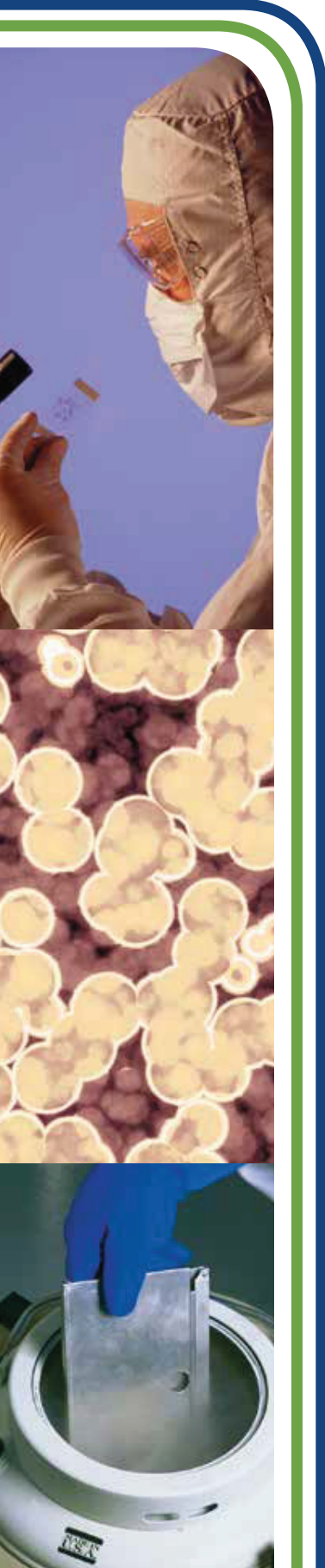
	SC 3/3	SC 8/5	SC 11/7	SC 20/20 Signature	SC 33/26	SC 36/32	Super 2
Maximum Storage Capacity							
Number of Canisters	6	6	6	6	6	6	6
Number of 1/2 cc Straws 10/ cane	-	-	660	540	540	540	660
Number of 1/2 cc Straws 1 Level Bulk	1122	1122	879	780	780	780	1122
Number of 1.2 & 2.0 ml vials 5/cane	-	-	150	-	150	150	210
Performance							
LN2 Capacity w/o Inventory L est.	3.6	8.4	11.0	20.5	33.0	36.5	24.5
Static Evaporation Rate* L/ day	0.13	0.15	0.16	0.09	0.13	0.10	0.085
Working Duration** Full Days	17	35	43	142	182	224	180
Unit Dimensions							
Neck Opening in. (mm)	2.18 (55)	2.18 (55)	2.18 (55)	2.16 (55)	2.18 (55)	2.18 (55)	2.18 (55.4)
Overall Height in. (mm)	16.0 (406)	18.5 (470)	21.6 (549)	26.0 (660)	25.9 (657)	27.2 (690)	28.2 (716)
Outer Diameter in. (mm)	8.7 (222)	10.2 (260)	10.2 (260)	14.5 (368)	18.2 (464)	18.2 (464)	14.5 (368)
Canister Height in. (mm)	5.0 (127)	5.0 (127)	11.0 (279)	11.0 (279)	11.0 (279)	11.0 (279)	11.0 (279)
Canister Diameter in. (mm)	1.65 (41.9)	1.65 (41.9)	1.65 (41.9)	1.65 (41.9)	1.50 (38)	1.50 (38)	1.65 (41.9)
Weight Empty lb. (kg)	8 (3.6)	12 (5.3)	17 (7.7)	26 (11.8)	34 (15.4)	34 (15.4)	26.5 (12)
Weight Full lb. (kg)	14.4 (65)	27.0 (12.1)	36.6 (16.6)	62.4 (28.3)	93.4 (42.4)	100.0 (44.8)	68.4 (31)

* Static evaporation rate and static holding time are nominal. Actual rate and holding time will be affected by the nature of container use, atmospheric conditions, and manufacturing tolerances.

** Working Duration is an arbitrary reference, to estimate container performance under normal operating conditions in liquid storage. Actual working time may vary due to current atmospheric conditions, container history, manufacturing tolerances and patterns of use.

TWO Year Parts Warranty • FIVE Year Vacuum Warranty

Conforms to MDD 93/42/EEC, the Medical Device Directive for the EU.



MVE XC Series

MVE XC Series tanks have capacities ranging from 700–5000 straws, and 210 to over 1000 vials. Manufactured to a world class level of excellence and backed by an industry-leading 5-year vacuum warranty, these durable, lightweight units can be relied on to perform in the most demanding of environments.

Features Include:

- Designed for large capacity storage
- Low liquid nitrogen consumption
- Convenient lightweight package



Tank Features



- A** Durable, tamper-proof lid design
- B** High strength neck tube reduces liquid nitrogen loss
- C** Strong, lightweight aluminum construction
- D** Canisters
- E** Advanced chemical vacuum retention system
- F** Spider design on platform for easy retrieval and insertion of product canisters
- G** Liquid Nitrogen Reservoir

	XC 20 Millennium	XC 21/6	XC 22/5	XC 32/8	XC 33/22	XC 34/18	XC 34/18 Plus***	XC 43/28	XC 47/11- 6SQ	XC 47/11-6	XC 47/11- 10
Maximum Storage Capacity											
Number of Canisters	6	9	6	9	6	6	6	6	6 sq.	6	10
Number of 1/2 cc Straws 10/cane	660	N/A	2,400	2,520	1,260	2,100	2,100	1,260	-	3,900+	3200
Number of 1/2 cc Straws 1 Level Bulk	879	3,870	3,666	3,960	1,764	3,300	3,300	1,764	-	6,200	5,000
Number of 1.2 & 2.0 ml vials 5/cane	210	N/A	810	855	360	630	630	360	-	1,320	1,050
Number of Racks 25 Vials	-	-	-	-	-	-	-	-	750	-	-
Performance											
LN2 Capacity w/o Inven- tory L est.	20.5	21.0	22.4	32.0	33.4	34.8	67.5	42.2	47.4	47.4	47.4
LN2 Capacity w/o Inven- tory Below Spider L est.							32.7	-	-	-	
Static Evaporation Rate* L/day	.095	0.35	0.35	0.35	0.14	0.18	0.31	0.14	0.39	0.39	0.39
Working Duration** Full Days	135	38	40	57	154	123	136	193	76	76	76
Unit Dimensions											
Neck Opening in. (mm)	2.18 (55)	3.50 (89)	3.81 (97)	3.81 (97)	2.75 (70)	3.50 (89)	3.50 (89)	2.75 (70)	5.00 (127)	5.00 (127)	5.00 (127)
Overall Height in. (mm)	25.7 (652)	17.2 (438)	22.0 (559)	21.5 (546)	26.0 (660)	26.6 (675)	37.5 (952)	26.4 (670)	26.5 (673)	26.5 (673)	26.5 (673)
Overall Inner Height in. (mm)	-	-	-	-	-	-	33.5 (850)	-	-	-	-
Outer Diameter in. (mm)	14.5 (368)	18.2 (464)	14.5 (368)	18.2 (464)	18.2 (464)	18.2 (464)	18.2 (464)	20.0 (508)	20.0 (508)	20.0 (508)	20.0 (508)
Canister Height in. (mm)	11 (279)	5 (127)	11 (279)	11 (279)	11 (279)	11 (279)	11 (279)	11 (279)	-	11 (279)	11 (279)
Canister Diameter in. (mm)	1.65 (41)	2.59 (68)	3.09 (79)	2.62 (67)	2.22 (56)	2.8 (71)	2.81 (71)	2.22 (56)	-	4.00 (102)	2.81 (71)
Distance: Platform to Top of Neck in. (mm)	-	-	-	-	-	-	21 (533)	-	-	-	-
Weight Empty lb. (kg)	23 (10.5)	24 (10.9)	26 (11.8)	30 (13.6)	34 (15.4)	34 (15.4)	45.9 (20.8)	36 (16.4)	42 (19.0)	42 (19.0)	42 (19.0)
Weight with Canisters lb. (kg)	-	-	-	-	-	-	45.9 (20.8)	-	-	-	-
Weight Full lb. (kg)	59.5 (27.0)	61.4 (27.9)	66.0 (30)	87.0 (39.5)	94.0 (42.5)	96.0 (43.5)	104.4 (47.3)	111.0 (50.5)	120.4 (54.6)	120.4 (54.6)	120.4 (54.6)

* Static evaporation rate and static holding time are nominal. Actual rate and holding time will be affected by the nature of container use, atmospheric conditions, and manufacturing tolerances.

** Working Duration is an arbitrary reference, to estimate container performance under normal operating conditions in liquid storage. Actual working time may vary due to current atmospheric conditions, container history, manufacturing tolerances and patterns of use.

***Optional center absorbent added to center canister (3 week holding time).

TWO Year Parts Warranty • FIVE Year Vacuum Warranty

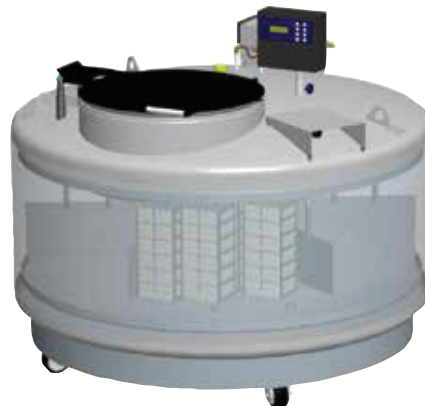
Conforms to MDD 93/42/EEC, the Medical Device Directive for the EU.

MVE Stock Series

The MVE Stock Series provides the ultimate in security for the breeding industry and are primarily used to store semen and embryos. The freezers are designed for pull and pack shipment, with a wide neck opening for easy access. Although engineered for liquid storage, most MVE Stock Series can be used to store in vapor.

Features include:

- Wide neck opening
- Lowest liftover height
- Largest LN2 Capacity
- Optional Battery Backup





	MVE 103	MVE 808	MVE 816P-2T-190	MVE 1318	MVE 1842P-150	MVE 1877P-2T-150
Maximum Storage Capacity						
1.2 & 2 ml Vials (Internally Threaded)	-	11,700	10,500	20,800	-	-
Quantity of Large Racks 100 cell boxes	-	12	-	24	-	-
Quantity of Mini Racks 25 cell boxes	-	4	-	8	-	-
Number of Shelves per Rack	-	9	-	8	-	-
High Security Straw Capacity (0.5 ml)	7,728	37,296	31,584	76,104	-	347,424
Number of Canisters (73 mm)	23	74	94	151	-	517
Goblets/Canister : Straws/Goblet	2:168	3:168	2:168	3:168	2:168	4:168
Number of SUC-1 Canisters (2.5"x2.5"x11)	22	61	115	129	294	539
Number of 1.2 ml Vials on Canes	3,168	8,784	16,560	18,576	42,336	77,616
Number of 2.0 ml Vials on Canes	1,760	4,880	9,200	10,320	23,520	43,120
Number of 1/2 cc Straws 10/cane	6,820	18,910	35,650	39,990	91,140	167,090
Performance						
LN2 Capacity w/o Inventory L est.	39	230	381	482	872	1456
LN2 Capacity at Platform Vapor L est.	-	-	56	-	-	250
Unit Dimensions						
Neck Opening in. (mm)	16.0 (406)	25.0 (634)	12.5 (317)	35.5 (901)	25.0 (635)	25.0 (635)
Usable Internal Height in. (mm)	12.0 (305)	22.0 (558)	13.0 (330) per level	18.8 (479)	13.0 (330)	13.0 (330) per tray
Inner Diameter in. (mm)	16.00 (406)	28.30 (720)	28.70 (728) top tier 27.70 (702) bottom tier	39.60 (1007)	56.1 (1425)	56.25 (1429) top and bottom tiers
Overall Height with Auto Fill in. (mm)	16.4 (415)	53.5 (1359)	58.0 (1473)	58.7 (1491)	51.1 (1296)	64.6 (1639)
Door Width Requirement** in. (mm)	18 (457)	31 (787)	32 (813)	42 (1067)	60 (1524)	60 (1524)
Weight Empty* lb. (kg)	48 (22)	250 (114)	475 (215)	469 (213)	1167 (530)	1721 (781)
Weight Liquid Full* lb. (kg) est.	117 (53)	660 (300)	1155 (524)	1328 (602)	2721 (1234)	4316 (1958)

TWO Year Parts Warranty • FIVE Year Vacuum Warranty

Conforms to MDD 93/42/EEC, the Medical Device Directive for the EU. Freezer systems UL/C-UL Listed.

* Without inventory

**Minimum width required for vessel to pass through opening. Footprint may vary. Contact Tech Service for detailed drawings.